

Unirac Large Array (U-LA)

PRE-CONFIGURED

Unirac Large Arrays start at 3 kilowatts, but their size is limited only by the size of your ground site or the structural strength of your flat roof. We design U-LAs for a wider range of site and climactic challenges than any other PV structure on the market.

Pre-configured U-LAs are a quick way of understanding costs and providing quotes for 80% of your U-LA designs. Just pick the site conditions and number of modules - we have done the rest.

Interactive PDF



Click on any of the prices in the Configuration Charts to receive:

- A bill of materials for all required components;
- Certification Letter.

\$2,635.35*



Steps for selecting a Pre-Configured U-LA

- 1 Pre-configured U-LAs are selected by array size assuming basic module parameters:
 - Approximate dimensions: 34" x 64"
 - Approximate dimensions: 40" x 65"
 - Approximate weight: 40 lbs.
 - Number of modules is a multiple of 4
 - Tilt angle of 30 degrees
 - Leading edge height of 24"
 - Assumes level ground

If the modules you wish to mount are not relative to these parameters, please consult Unirac to obtain a quote or estimate.

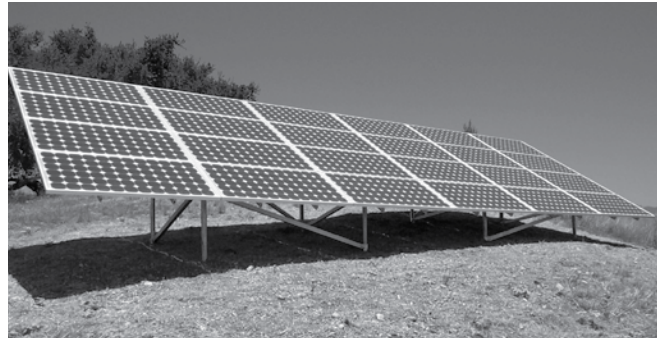


Figure 1. Demonstrates a 4 row x 6 column U-LA

- 2 All pre-configured U-LAs use aluminum components with SolarMount HD (heavy duty) rail system unless indicated otherwise. If you wish to use U-LA steel components, please consult Unirac to obtain a quote or estimate.

Below is a list of information you'll need to select the appropriate pre-configured U-LA.

- 3 Use the charts to select the appropriate array and price. Use the tables on the next page to select the load combinations that best fit your needs. Use the bill of materials generator sheet that pops up to either add columns or arrays to get the configuration you're working with. PCULA's are set up for multiples of four.
- 4 Determine your Seismic Conditions, Snow Load (psf) and Wind Conditions (See Figure 2 to determine Wind Speed) We **highly** recommend that you consult the local building department for the basic wind speed, seismic zone and ground snow load at the site.

The ASCE/SEI 7-05* defines wind exposure categories as follows:

EXPOSURE B is urban and suburban areas, wooded areas, or other terrain with numerous closely spaced obstructions having the size of single family dwellings.

EXPOSURE C has open terrain with scattered obstructions having heights generally less than 30 feet. This category includes flat open country, grasslands, and all water surfaces in hurricane prone regions.

EXPOSURE D has flat, unobstructed areas and water surfaces outside hurricane prone regions. This category includes smooth mud flats, salt flats, and unbroken ice.

Also see ASCE 7-05 pages 287-291 for further explanation and explanatory photographs, and **confirm your selection with the local building authority.**

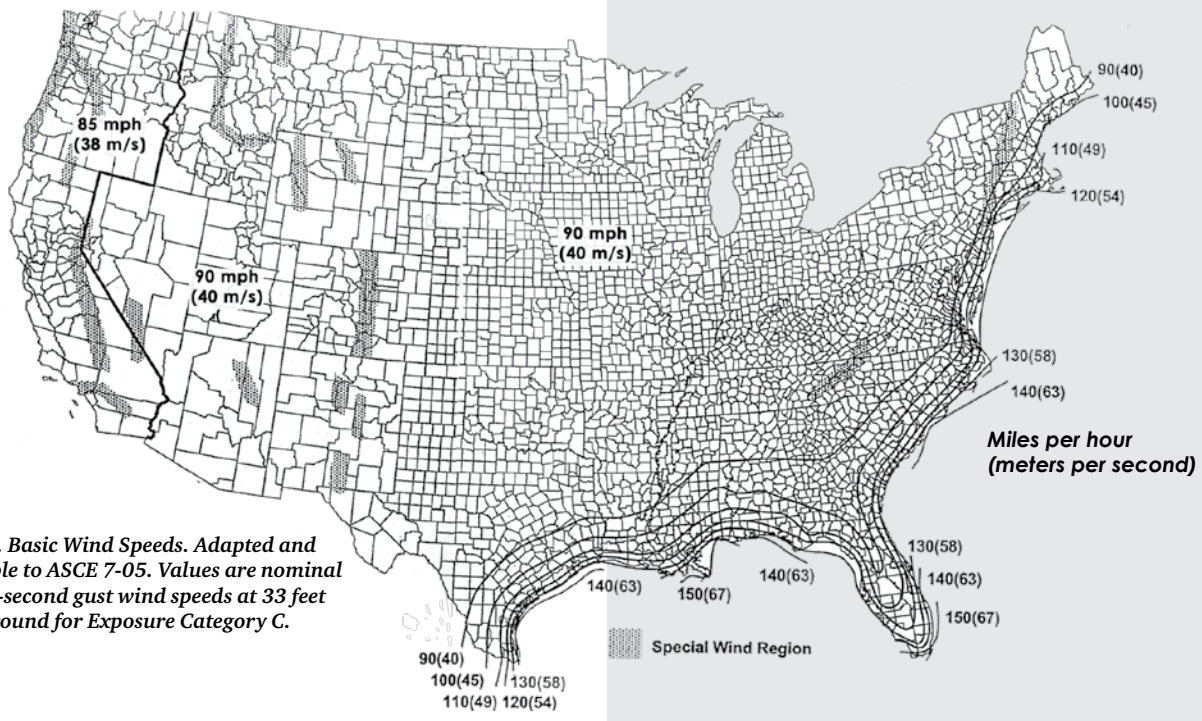


Figure 2. Basic Wind Speeds. Adapted and applicable to ASCE 7-05. Values are nominal design 3-second gust wind speeds at 33 feet above ground for Exposure Category C.

Configuration Charts

Select a pre-configured U-LA by seismic zone and wind conditions. All pre-configured U-LAs use SolarMount HD (heavy duty) rail system unless otherwise indicated.

NOTE: Wind conditions of ≤95C have been quoted with components that fit a 2" Schedule 40 pipe and winds speeds of 95C-120D have been quoted with components that fit a 3" Schedule 40 pipe.

Interactive PDF 

Click on any of the prices in the Configuration Charts to receive:

- A bill of materials for all required components;
- Certification Letter.

\$2,635.35*



Module size 34" x 64" or less:

(Click on the configuration that matches your needs.)

	No Snow		Snow 20 PSF	
No Seismic	95C Wind	95C - 120D Wind	95C Wind	95C - 120D Wind
Seismic Zone	95C Wind	95C - 120D	95C Wind	95C - 120D Wind

Module size 40" x 65" or less:

(Click on the configuration that matches your needs.)

	No Snow		Snow 20 PSF	
No Seismic	95C Wind	95C - 120D Wind	95C Wind	95C - 120D Wind
Seismic Zone	95C Wind	95C - 120D	95C Wind	95C - 120D Wind